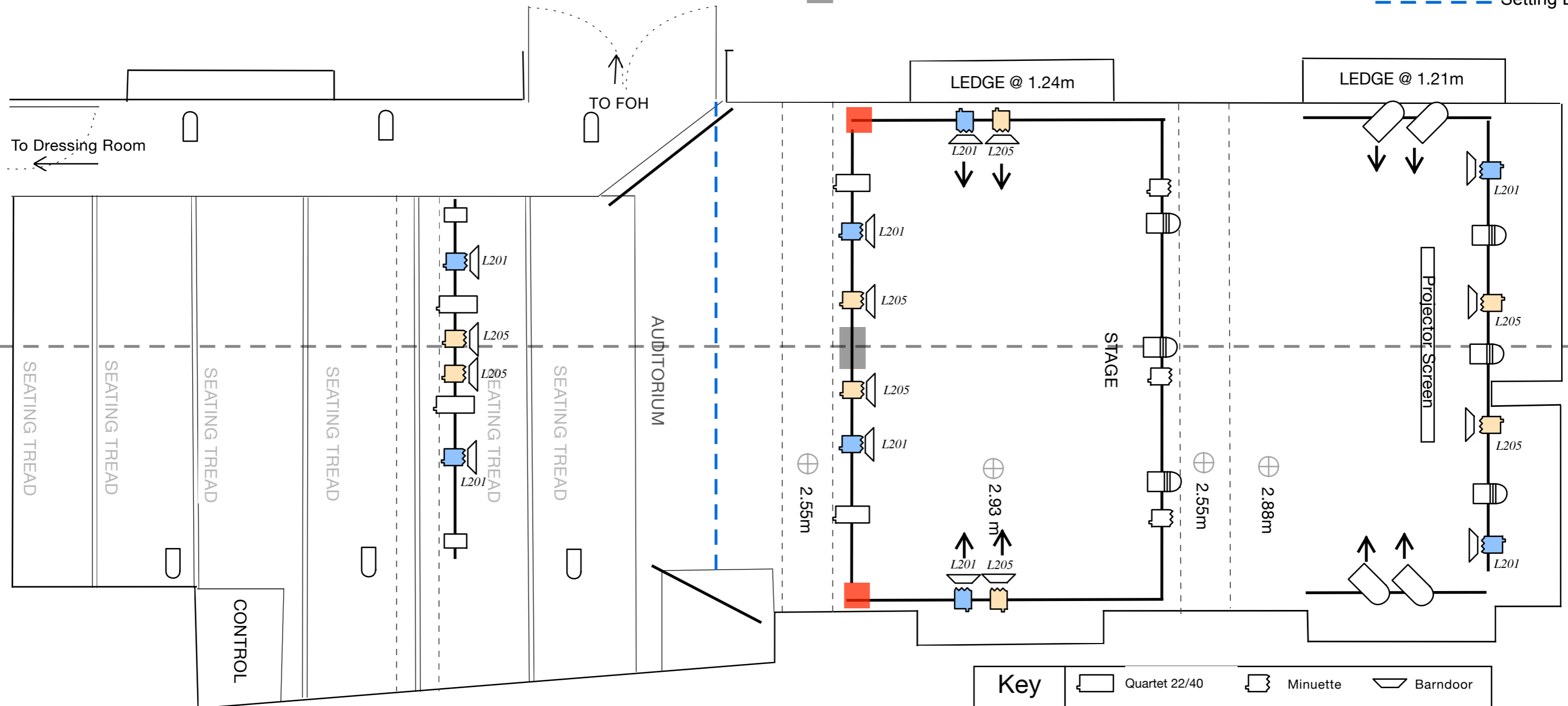


FIXED Plan

Width of Space: 5.8m (Upstage), 5.2m (Downstage)
 Height to Ceiling (Lowest Point): 2.55m
 Height to Lighting Bars: 2.71m
 Depth (Back Wall to Front Row of Seating): 7.35m
 Depth (Back Wall to Back Row of Seating): 13.26m
 Depth (Back Wall to Setting Line): 6.35m
 Control Position to Setting Line: 5m

◻ Permently rigged House Lights
 ◻ Permantly Rigged House Lights
 ↑ Paired Units
 ■ Permantly Rigged Projector
 ■ Permantly Rigged Speaker
 — Lighting Bars
 - - - Setting Line



Key			
	Quartet 22/40		Minuette
	Quartet 25		Birdie
	Prelude F		par64mfl
	Nocturne 500		LED PAR RGBWA+UV
	Barndoor		Location